



# BELIZE POLICE DEPARTMENT

## ROAD TRAFFIC STATISTICS

### January & February 2008

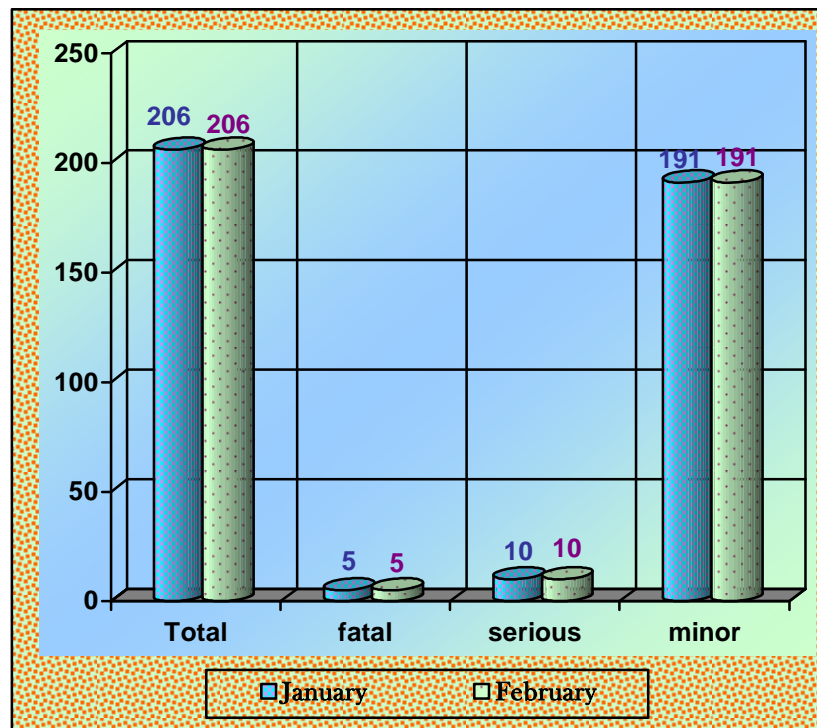


#### *Comparative Countrywide Road Traffic Accidents*

During the period under review January 2008 there were a total of two hundred and six (206) road traffic accidents recorded nationwide. A comparison between December 2007 and January 2008 shows a decreased of eighteen (18) accidents or 8.0 %.

The Belize District recorded the highest number of accidents with ninety six (96) reports in January 2008, this reflect a decrease of (16) accidents when compared with the previous month (Dec 07). The Orange Walk District recorded the second highest in January 2008, with a total of thirty four (34) reports.

*Table Showing Countrywide ROAD TRAFFIC ACCIDENTS  
For January & February 2008*



| <b>December 2007 &amp;<br/>January 2008</b>  | <b>Corozal</b>  |                 | <b>Orange Walk</b> |                 | <b>Belize</b>   |                 | <b>Belmopan</b> |                 | <b>San Ignacio</b> |                 | <b>Benque Viejo</b> |                 | <b>Stann Creek</b> |                 | <b>Toledo</b>   |                 | <b>TOTALS</b>   |                 |
|--|-----------------|-----------------|--------------------|-----------------|-----------------|-----------------|-----------------|-----------------|--------------------|-----------------|---------------------|-----------------|--------------------|-----------------|-----------------|-----------------|-----------------|-----------------|
|  | <i>Dec - 07</i> | <i>Jan - 08</i> | <i>Dec - 07</i>    | <i>Jan - 08</i> | <i>Dec - 07</i> | <i>Jan - 08</i> | <i>Dec - 07</i> | <i>Jan - 08</i> | <i>Dec - 07</i>    | <i>Jan - 08</i> | <i>Dec - 07</i>     | <i>Jan - 08</i> | <i>Dec - 07</i>    | <i>Jan - 08</i> | <i>Dec - 07</i> | <i>Jan - 08</i> | <i>Dec - 07</i> | <i>Jan - 08</i> |
| <b>Total Amount of Accidents</b>             | 29              | 27              | 30                 | 34              | 112             | 96              | 11              | 18              | 19                 | 15              | 2                   | 0               | 11                 | 10              | 10              | 6               | 224             | 206             |
| <b>Classification of Accidents</b>           |                 |                 |                    |                 |                 |                 |                 |                 |                    |                 |                     |                 |                    |                 |                 |                 |                 |                 |
| <i>Fatal</i>                                 | 0               | 1               | 1                  | 0               | 2               | 0               | 0               | 1               | 0                  | 1               | 0                   | 0               | 1                  | 2               | 0               | 0               | 4               | 5               |
| <i>Serious</i>                               | 1               | 1               | 0                  | 0               | 4               | 1               | 0               | 0               | 0                  | 2               | 0                   | 0               | 3                  | 5               | 4               | 1               | 12              | 10              |
| <i>Minor</i>                                 | 28              | 25              | 29                 | 34              | 106             | 95              | 11              | 17              | 19                 | 12              | 2                   | 0               | 7                  | 3               | 6               | 5               | 208             | 191             |
| <b>Classification of Injuries</b>            |                 |                 |                    |                 |                 |                 |                 |                 |                    |                 |                     |                 |                    |                 |                 |                 |                 |                 |
| <i>Fatal</i>                                 | 0               | 1               | 2                  | 0               | 2               | 0               | 0               | 1               | 0                  | 1               | 0                   | 0               | 1                  | 3               | 0               | 0               | 5               | 6               |
| <i>Serious</i>                               | 0               | 2               | 0                  | 0               | 4               | 1               | 0               | 0               | 0                  | 1               | 0                   | 0               | 3                  | 5               | 4               | 1               | 11              | 10              |
| <i>Minor</i>                                 | 5               | 5               | 9                  | 9               | 14              | 14              | 1               | 0               | 8                  | 4               | 0                   | 0               | 7                  | 3               | 4               | 2               | 48              | 37              |
| <b>Types of Vehicles</b>                     |                 |                 |                    |                 |                 |                 |                 |                 |                    |                 |                     |                 |                    |                 |                 |                 |                 |                 |
| <i>Private</i>                               | 16              | 19              | 34                 | 38              | 148             | 120             | 16              | 21              | 24                 | 8               | 2                   | 0               | 15                 | 11              | 9               | 9               | 264             | 226             |
| <i>Taxis</i>                                 | 4               | 4               | 2                  | 4               | 15              | 18              | 2               | 0               | 4                  | 0               | 1                   | 0               | 1                  | 2               | 0               | 0               | 29              | 28              |
| <i>Police</i>                                | 0               | 0               | 0                  | 0               | 3               | 5               | 0               | 0               | 1                  | 0               | 0                   | 0               | 0                  | 0               | 0               | 0               | 4               | 5               |
| <i>Commercial Vehicles</i>                   | 1               | 0               | 7                  | 5               | 11              | 10              | 1               | 3               | 4                  | 0               | 0                   | 0               | 1                  | 0               | 3               | 1               | 28              | 19              |
| <i>Cyclists</i>                              | 2               | 3               | 2                  | 5               | 11              | 10              | 0               | 2               | 0                  | 1               | 0                   | 0               | 1                  | 0               | 2               | 0               | 18              | 21              |
| <i>Others(omnibus,BDF,Trac,etc)</i>          | 28              | 25              | 5                  | 9               | 41              | 34              | 2               | 8               | 0                  | 4               | 1                   | 0               | 1                  | 6               | 0               | 0               | 78              | 86              |
| totals                                       | 51              | 51              | 50                 | 61              | 229             | 197             | 21              | 34              | 33                 | 13              | 4                   | 0               | 19                 | 19              | 14              | 10              | 421             | 385             |
| <b>Common Causes of Road Accidents</b>       |                 |                 |                    |                 |                 |                 |                 |                 |                    |                 |                     |                 |                    |                 |                 |                 |                 |                 |
| <i>Careless Conduct</i>                      | 23              | 25              | 20                 | 26              | 49              | 41              | 11              | 14              | 15                 | 0               | 1                   | 0               | 6                  | 7               | 0               | 0               | 125             | 113             |
| <i>Alcohol Influenced</i>                    | 3               | 0               | 5                  | 3               | 1               | 1               | 0               | 1               | 0                  | 0               | 0                   | 0               | 3                  | 0               | 1               | 1               | 13              | 6               |
| <i>Driver Error/Neglig. Passenger</i>        | 0               | 0               | 0                  | 0               | 15              | 6               | 0               | 0               | 0                  | 0               | 0                   | 0               | 3                  | 1               | 6               | 5               | 24              | 12              |
| <i>Negligent Pedestrian</i>                  | 1               | 1               | 1                  | 2               | 1               | 1               | 0               | 0               | 0                  | 0               | 0                   | 0               | 0                  | 0               | 0               | 0               | 3               | 4               |
| <i>Negligent Cyclist</i>                     | 1               | 1               | 1                  | 0               | 3               | 4               | 0               | 3               | 0                  | 0               | 0                   | 0               | 2                  | 0               | 1               | 0               | 8               | 8               |
| <b>Common Causes of FATAL Road Accidents</b> |                 |                 |                    |                 |                 |                 |                 |                 |                    |                 |                     |                 |                    |                 |                 |                 |                 |                 |
| <i>Careless Conduct</i>                      | 0               | 1               | 0                  | 0               | 1               | 0               | 0               | 1               | 0                  | 0               | 0                   | 0               | 0                  | 1               | 0               | 0               | 1               | 3               |
| <i>Inattention/Misjudgement</i>              | 0               | 0               | 0                  | 0               | 0               | 0               | 0               | 0               | 0                  | 0               | 0                   | 0               | 0                  | 1               | 0               | 0               | 0               | 1               |
| <i>Reversing/Turning Error</i>               | 0               | 0               | 0                  | 0               | 0               | 0               | 0               | 0               | 0                  | 0               | 0                   | 0               | 0                  | 1               | 0               | 0               | 0               | 1               |
| <i>Alcohol Influenced</i>                    | 0               | 0               | 1                  | 0               | 1               | 0               | 0               | 0               | 0                  | 0               | 0                   | 0               | 0                  | 0               | 0               | 0               | 2               | 0               |
| <i>Negligent Pedestrian</i>                  | 0               | 0               | 0                  | 0               | 0               | 0               | 0               | 0               | 0                  | 1               | 0                   | 0               | 0                  | 0               | 0               | 0               | 0               | 1               |
| <i>Driver Error/Neglig. Passenger</i>        | 0               | 0               | 0                  | 0               | 0               | 0               | 0               | 0               | 0                  | 0               | 0                   | 0               | 0                  | 1               | 0               | 0               | 0               | 1               |

## COMPARATIVE ANALYSIS COUNTRYWIDE

### Fatal Road Traffic Accidents.

In **January 2008, there were five (5) fatal road** traffic accidents recorded countrywide that claimed the lives of six (6) victims. The first occurred in the Stann Creek district and claimed the lives of two persons. Another incident took place on the Western Highway between San Ignacio and Belmopan where one person lost her life. The third fatal accident was reported by Independence Police which occurred between miles 28 and 29 on the Southern Highway. The fourth incident occurred in the Corozal District between miles 82 and 83 on the Northern Highway where one person died. The fifth accident took place at Cotton Tree village, Cayo district and claimed the life of a pedestrian. Statistics show that the number of *Fatal Road Traffic Accidents and casualties remains the same as the previous month.*

#### **STANN CREEK DISTRICT FATAL ROAD TRAFFIC ACCIDENT:**

On 15<sup>th</sup> January 2008, Police visited the scene of a traffic accident on the Southern Highway at the junction with Hopkins Village where they saw a collision between a Ford Ranger pickup L/P Cy C-25125 driven by Charles Rubio and a Freightliner Truck L/P BZ A-3656 driven at the time by Douglas Sutherland. Investigations reveal that the driver of the pickup made a sudden left turn into Hopkins road and as a result the freightliner truck accidentally collided into the side of the pickup. As a result, seven persons traveling in the pickup received injuries. Jason Valentine a 3yrs old minor received severe head and body injuries and died whilst undergoing treatment. Angela Guiterrez, 75 yrs Belizean Domestic later passed away whilst undergoing treatment at K. H. M. H.

#### **CAYO DISTRICT FATAL ROAD TRAFFIC ACCIDENT:**

On Wednesday 23<sup>rd</sup> January 2008, Police visited La Loma Luz Hospital where they saw the lifeless body of Tomasita de Jesus Martinez with a large cut wound to the back of the head. Investigation revealed that she alighted a bus and attempted to cross the highway and was knocked down by a blue Toyota pickup L/P CY C-24490 driven by Roquelino Castaneda, 32 yrs of Santa Elena Town. Castaneda immediately transported the victim to Loma Luz Hospital where she was pronounced dead on arrival.

#### **I. S. F., STANN CREEK DISTRICT FATAL ROAD TRAFFIC ACCIDENT:**

On 26<sup>th</sup> January 2008, Police visited the scene of a road traffic accident between miles 28 and 29 on the Southern Highway where the body of Alvaro Neri Taca, 20 yrs Belizean laborer of Maya Mopan Village, Stann Creek District was seen lying in the middle of the highway with a large cut wound to the back of the head. Police investigation into this incident continues.

#### **COROZAL DISTRICT FATAL ROAD TRAFFIC ACCIDENT:**

On 29<sup>th</sup> January 2008, Alvin Leslie 55yrs, Belizean Taxi driver of 7<sup>th</sup> Avenue, Corozal Town, was driving a van Czl-D-1779 on the Northern Highway from Corozal Town towards the Airstrip and on reaching between miles 82 and 83, he collided into a car Czl-C-15563 driven by Marvin Martinez, 41yrs, Businessman of San Joaquin Village, Corozal District, who was traveling in the opposite direction. As a result Leslie suffered severe head injuries and was transported to the Corozal Town

hospital where he was pronounced dead on arrival. Martinez was admitted to ward in a stable condition. Police are investigating.

### **BELMOPAN, CAYO DISTRICT FATAL ROAD TRAFFIC ACCIDENT:**

On 29<sup>th</sup> January 2008, Police visited miles 43 and 44 on the Western Highway where they saw the lifeless body of Camelo Rash, 42yrs, Belizean laborer of Cotton Tree Village lying face down on the side of Highway. Investigation revealed that at about 7:15pm on 28.1.08, Rash was walking on the Highway and was accidentally knocked down by a white Jeep Cherokee L/P CYC-23410, driven Fermin Harry, 74yrs, Honduran National of #19 Lubantun Street Belmopan. The body of Rash was transported to the Belmopan hospital and was pronounced dead on arrival. As a result Police arrested and charged Fermin Harry for various traffic offences.

### **Serious Road Traffic Accidents**

During the period under review January 2008 there were (10) Serious Road Traffic Accidents reported countrywide. This reflects a decreased of two (2) reports when compared to December 2007.

### **Minor Road Traffic Accidents**

There was a decrease in minor road traffic accidents reported countrywide, from two hundred and eight (208) reports in December 2007, to one hundred and ninety one (191) minor traffic accidents reported in January 2008, therefore showing a *decrease* of 8.2 %.

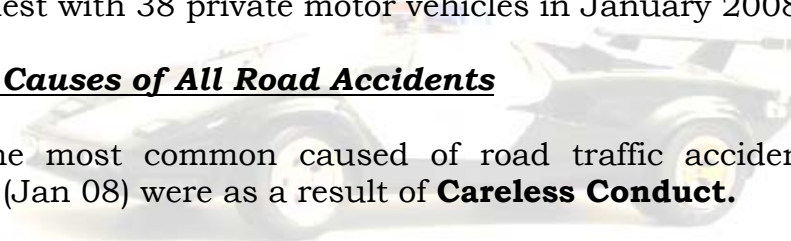
### **Vehicles involved in Road Traffic Accidents Countrywide**

During the period under review, there was a *decrease* in the number of motor vehicles involved in road traffic accidents countrywide. In January 2008 there were 385 motor vehicles that were involved in traffic accidents this reflects a decrease of 36 vehicles when compared to the pervious month (December 07).

The most *common type of vehicle* involved in road traffic accidents are: *Private Motor vehicles* which shows a *decreased of 38 vehicles countrywide*, with two hundred and twenty six (226) in January 2008. The Belize District continues to reflect the highest, with 120 private motor vehicles in January 2008. The Orange Walk district is the second highest with 38 private motor vehicles in January 2008.

### **Common Causes of All Road Accidents**

Statistics shows that the most common caused of road traffic accidents during the period under review (Jan 08) were as a result of **Careless Conduct**.



| January 2007 & 2008                          | Corozal  |          | Orange Walk |          | Belize   |          | Belmopan |          | San Ignacio |          | Benque Viejo |          | Stann Creek |          | Toledo   |          | TOTALS   |          |
|--|----------|----------|-------------|----------|----------|----------|----------|----------|-------------|----------|--------------|----------|-------------|----------|----------|----------|----------|----------|
|  | Jan - 07 | Jan - 08 | Jan - 07    | Jan - 08 | Jan - 07 | Jan - 08 | Jan - 07 | Jan - 08 | Jan - 07    | Jan - 08 | Jan - 07     | Jan - 08 | Jan - 07    | Jan - 08 | Jan - 07 | Jan - 08 | Jan - 07 | Jan - 08 |
| <b>Total Amount of Accidents</b>             | 22       | 27       | 17          | 34       | 106      | 96       | 25       | 18       | 4           | 15       | 5            | 0        | 15          | 10       | 3        | 6        | 197      | 206      |
| <b>Classification of Accidents</b>           |          |          |             |          |          |          |          |          |             |          |              |          |             |          |          |          |          |          |
| <i>Fatal</i>                                 | 0        | 1        | 1           | 0        | 0        | 0        | 2        | 1        | 0           | 1        | 0            | 0        | 2           | 2        | 0        | 0        | 5        | 5        |
| <i>Serious</i>                               | 2        | 1        | 0           | 0        | 5        | 1        | 0        | 0        | 1           | 2        | 0            | 0        | 0           | 5        | 1        | 1        | 9        | 10       |
| <i>Minor</i>                                 | 20       | 25       | 16          | 34       | 101      | 95       | 23       | 17       | 3           | 12       | 5            | 0        | 13          | 3        | 2        | 5        | 183      | 191      |
| <b>Classification of Injuries</b>            |          |          |             |          |          |          |          |          |             |          |              |          |             |          |          |          |          |          |
| <i>Fatal</i>                                 | 0        | 1        | 1           | 0        | 0        | 0        | 2        | 1        | 0           | 1        | 0            | 0        | 3           | 3        | 0        | 0        | 6        | 6        |
| <i>Serious</i>                               | 2        | 2        | 0           | 0        | 0        | 1        | 0        | 0        | 1           | 1        | 0            | 0        |             | 5        | 2        | 1        | 5        | 10       |
| <i>Minor</i>                                 | 5        | 5        | 1           | 9        | 11       | 14       | 0        | 0        | 0           | 4        | 1            | 0        |             | 3        | 4        | 2        | 22       | 37       |
| <b>Types of Vehicles</b>                     |          |          |             |          |          |          |          |          |             |          |              |          |             |          |          |          |          |          |
| <i>Private</i>                               | 29       | 19       | 15          | 38       | 85       | 120      |          | 21       | 3           | 8        | 7            | 0        |             | 11       | 3        | 9        | 142      | 226      |
| <i>Taxis</i>                                 | 6        | 4        | 2           | 4        | 27       | 18       |          | 0        | 0           | 0        | 2            | 0        |             | 2        | 0        | 0        | 37       | 28       |
| <i>Police</i>                                | 0        | 0        | 0           | 0        | 2        | 5        |          | 0        | 0           | 0        | 0            | 0        |             | 0        | 0        | 0        | 2        | 5        |
| <i>Commercial Vehicles</i>                   | 1        | 0        | 9           | 5        | 16       | 10       |          | 3        | 0           | 0        | 0            | 0        |             | 0        | 0        | 1        | 26       | 19       |
| <i>Cyclists</i>                              | 3        | 3        | 1           | 5        | 6        | 10       |          | 2        | 1           | 1        | 0            | 0        |             | 0        | 0        | 0        | 11       | 21       |
| <i>Others(omnibus,BDF,Trac,etc)</i>          | 2        | 25       | 3           | 9        | 62       | 34       |          | 8        | 4           | 4        | 9            | 0        |             | 6        | 0        | 0        | 80       | 86       |
| totals                                       | 41       | 51       | 30          | 61       | 198      | 197      | 0        | 34       | 8           | 13       | 18           | 0        | 0           | 19       | 3        | 10       | 298      | 385      |
| <b>Common Causes of Road Accidents</b>       |          |          |             |          |          |          |          |          |             |          |              |          |             |          |          |          |          |          |
| <i>Careless Conduct</i>                      | 21       | 25       | 13          | 26       | 67       | 41       |          | 14       | 4           | 0        | 0            | 0        |             | 7        | 0        | 0        | 105      | 113      |
| <i>Alcohol Influenced</i>                    |          | 0        | 1           | 3        | 3        | 1        |          | 1        | 0           | 0        | 0            | 0        |             | 0        | 2        | 1        | 6        | 6        |
| <i>Driver Error/Neglig. Passenger</i>        |          | 0        | 1           | 0        | 3        | 6        |          | 0        | 0           | 0        | 2            | 0        |             | 1        | 0        | 5        | 6        | 12       |
| <i>Negligent Pedestrian</i>                  |          | 1        |             | 2        | 2        | 1        |          | 0        | 0           | 0        | 0            | 0        |             | 0        | 0        | 0        | 2        | 4        |
| <i>Negligent Cyclist</i>                     | 1        | 1        |             | 0        | 4        | 4        |          | 3        | 0           | 0        | 0            | 0        |             | 0        | 1        | 0        | 6        | 8        |
| <b>Common Causes of FATAL Road Accidents</b> |          |          |             |          |          |          |          |          |             |          |              |          |             |          |          |          |          |          |
| <i>Careless Conduct</i>                      | 0        | 1        | 1           | 0        | 0        | 0        | 2        | 1        | 0           | 0        | 0            | 0        | 1           | 1        | 0        | 0        | 4        | 3        |
| <i>Inattention/Misjudgement</i>              | 0        | 0        | 0           | 0        | 0        | 0        | 0        | 0        | 0           | 0        | 0            | 0        | 0           | 1        | 0        | 0        | 0        | 1        |
| <i>Reversing/turning Error</i>               | 0        | 0        | 0           | 0        | 0        | 0        | 0        | 0        | 0           | 0        | 0            | 0        | 0           | 1        | 0        | 0        | 0        | 1        |
| <i>Negligent Pedestrian</i>                  | 0        | 0        | 0           | 0        | 0        | 0        | 0        | 0        | 0           | 1        | 0            | 0        | 0           | 0        | 0        | 0        | 0        | 1        |
| <i>Negligent Cyclist</i>                     | 0        | 0        | 0           | 0        | 0        | 0        | 0        | 0        | 0           | 0        | 0            | 0        | 1           | 0        | 0        | 0        | 1        | 0        |
| <i>Driver Error/Neglig. Passenger</i>        | 0        | 0        | 0           | 0        | 0        | 0        | 0        | 0        | 0           | 0        | 0            | 0        | 0           | 1        | 0        | 0        | 0        | 1        |

### **COMPARATIVE ANALYSIS (January 2008 & January 2007)**

In January 2008, there were a total of *two hundred and six (206)* road traffic accidents reported countrywide. *Five (5) of these accidents were fatal*, which resulted in the lost of *six (6) lives*. When compared with January 2007 statistics shows an increase of (9) road traffic accident however the number of fatal accidents and the number of victims remains the same.

In relation to serious traffic accidents during the period under review (Jan 08) there were (10) reported cases which shows an increase of (1) accident when compared to this same period January 2007. There were (10) persons receiving serious injuries, as a result of these accidents which reflects an increased of (5) when compared with the same period in 2007.

There were (191) minor road traffic accident reported in January 2008, which reflects an increase of (8) cases when compared to the same period in 2007

When comparing January 2008 with the previous month (Dec 07) statistics shows a decrease in the number of road traffic accidents countrywide. There were also decreases in Serious and Minor traffic accidents. The number of fatal accidents and casualties remains the same as the previous month.